

# Corinex VoIP USB Phone



# Declaration of Conformity



Model: **Corinex VoIP USB Phone**

Manufacturer: Corinex Communications Corp.  
World Trade Center  
404-999 Canada Place  
Vancouver B.C.  
Canada V6C 3E2

This product is herewith declared to comply with the requirements set out in the Council Directive on the Approximation of the laws of the Member States relating to Electromagnetic Compatibility Directive (89/336/EEC). For the evaluation regarding EMC, the following standards were applied:

- EN 55022:1998+A1:2000 Class B : Emission standard
- EN 55024:1998+A1:2001 : Immunity standard
- EN 61000-3-2:1995 Class A : Limits for harmonic current emission
- Amendment 1:1998
- Amendment 2:1998
- EN 61000-3-3:1995 : Limitation of voltage fluctuation and flicker in low-voltage supply system

The undersigned hereby declares the above specified equipment conforms to the above directives and standards.

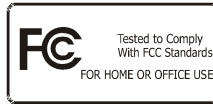
Printed name / Title: **Peter Sobotka / CEO** .....

Place / Date: **Vancouver / May.20.2004** .....

Signature:  .....

# Declaration of Conformity

For US Market Only



Model:

**Corinex VoIP USB Phone**

Manufacturer:

Corinex Communications Corp.  
World Trade Center  
404-999 Canada Place  
Vancouver B.C.  
Canada V6C 3E2

This device complies with Part 15 of the FCC rules. Operation is subject to the following two conditions:

- 1) this device may not cause harmful interference, and
- 2) this device must accept any interference received, including interference that may cause undesired operation.

This equipment has been tested and found to comply with the limits of a Class B digital device, pursuant to Part 15 of the FCC Rules.

## User Warning !

**Any changes or modification to said product not expressly approved by Corinex could void the user's authority to operate the equipment.**

Printed name / Title: **Peter Sobotka / CEO**

Place / Date: **Vancouver / May.20.2004**

Signature: 

This document, as well as the software described in it, is furnished under license and may be used or copied only in accordance with the terms of the license. The content of this document is furnished for informational use only, it is subject to change without notice, and it does not represent a commitment on the part of Corinex Communications Corp.

Corinex Communications Corp. assumes no responsibility or liability for any errors or inaccuracies that may appear in this document.

It is our policy to enhance our products as new technologies, hardware components, software and firmware become available; therefore, the information contained in this document is subject to change without notice.

Some features, functions, and operations described in this document may not be included and sold in certain countries due to government regulations or marketing policies.

The use of the product or its features described in this document may be restricted or regulated by law in some countries. If you are unsure which restrictions or regulations apply, you should consult your regional Corinex office or the authorized reseller.

Published by:  
Corinex Communications Corp.  
World Trade Center  
404-999 Canada Place  
Vancouver, B.C.  
Canada V6C 3E2  
Tel.: +1 604 692 0520  
Fax: +1 604 694 0061

Corinex is a registered trademark of Corinex Communications Corp.

Microsoft, MS-DOS, MS, Windows are either registered trademarks or trademarks of Microsoft Corporation in the U.S.A. and/or other countries.

All products or company names mentioned herein may be the trademarks of their respective owners.

Copyright (c) 2001-2004 by Corinex Communications Corp.

## Quick start

1. Connect the USB phone to the USB port of your computer
2. Start your voice communication software and set it up to use the phone as the output/input device. You can use an existing service or Corinex softphone that comes on the included CD.
3. You are ready to make calls over the Internet

# Content

	<b>Copyright</b> .....	<b>1</b>
	<b>Quick start</b> .....	<b>2</b>
	<b>Content</b> .....	<b>3</b>
<b>1</b>	<b>Introduction</b> .....	<b>4</b>
1.1	Overview .....	4
1.2	Package Content .....	4
1.3	System Requirements .....	5
<b>2</b>	<b>Using Corinex VoIP USB Phone</b> .....	<b>6</b>
2.1	Hardware installation .....	7
2.2	Using the USB phone with NetMeeting .....	7
2.3	Using the USB phone with Skype .....	11
<b>3</b>	<b>Using the USB phone with Corinex Softphone</b> .....	<b>12</b>
3.1	Using the phone with predefined free operators .....	12
3.1.1	Free World Dialup .....	12
3.1.2	AddaVoice .....	14
3.1.3	SIP Phone .....	15
3.2	Software installation .....	18
<b>4</b>	<b>Using the Corinex Softphone software</b> .....	<b>21</b>
4.1	First start of the Corinex Softphone .....	21
4.2	Advanced configuration .....	22
4.3	Using the Corinex Softphone .....	24
4.3.1	Display .....	24
4.3.2	Phone controls .....	27
4.3.3	Making a VoIP call .....	30
4.3.4	Configuration of the Softphone .....	33

---

# 1 Introduction

## 1.1 Overview

With *Corinex VoIP USB Phone*, users can make calls via the Internet and save on long distance and international call costs. Installation is as easy as plugging the phone into a USB port without the need of any drivers. The phone is fully compatible with NetMeeting, Skype and other PC-based softphone applications. The Corinex VoIP Phone comes in a streamlined and fashionable design similar to a mobile phone with volume control button and a built-in wall-mount accessory.

Free *Corinex Softphone software* is included on the installation CD that is compatible with Windows 98SE/ME/2000/XP and supports the Windows HID Driver. It supports free VoIP Internet services such as Addavoice, Free World Dialup or SIPphone, and can be set up for working with any VoIP service supporting the SIP protocol, for making PC-to-PC or PC-to-Phone calls.

## 1.2 Package Content

When you receive your *Corinex VoIP USB Phone*, check to be sure that your package contains:

- Corinex VoIP USB Phone with USB Cable
- Installation CD containing the Corinex Softphone software and this manual

### USB Phone Features

- Compatibility with NetMeeting, Skype, Hicall, PC-based softphone software
- Volume control button
- Wall mount accessory
- Supports Windows 98SE/ME/2000/XP

### Softphone Features

- Compliant with SIP protocol
- Supports multiple codecs for VoIP (low speed, high quality)
- Installation CD with the possibility of choosing from multiple service providers (AddaVoice, Free World Dialup or SIPphone)

- Can be set up to work with any VoIP service provider supporting the SIP-protocol
- Direct communication with the Corinex VoIP USB Phone buttons
- Call log (outgoing, incoming and missed calls)
- Phonebook
- Different skins
- Customizable WAV ring tones
- Software updates and downloads available from [www.corinex.com/downloads](http://www.corinex.com/downloads)

As we constantly innovate our products, it can happen that we have newer versions of software tools and documentation than those included on the installation CD. If you want to check (and download) the latest versions for your Corinex product, go to <http://www.corinex.com/support>

### 1.3 System Requirements

- IBM compatible PC with a USB port
- Microsoft Windows 98SE/ME/2000/XP operating system
- DirectX 8.1 (or higher version)



## 2 Using Corinex VoIP USB Phone

You can use the *Corinex VoIP USB Phone* in two ways:

1. As an audio input/output device in combination with common 3rd party software supporting voice communication (read more in chapter 2.2 and 2.3)
2. As the interface for controlling the *Corinex Softphone software* included on the CD, which enables you to use VoIP services of different providers (read more in chapter 3.)

The following picture shows the physical description of your USB phone:



**Note:** The functionality of the particular keys depends on the software you are using with your USB phone.

## 2.1 Hardware installation

This section outlines how to connect your *Corinex VoIP USB Phone* to your computer. The installation is very simple, all you need to do is to connect the phone's cable to the USB port of your computer. The red status LED on the phone will be on.

If you are connecting the USB Phone for the first time, Windows will detect a new hardware device and install drivers. There is no need for any special drivers, as the phone supports the Windows Human Device Interface and USB Audio Device 1.0 standards.

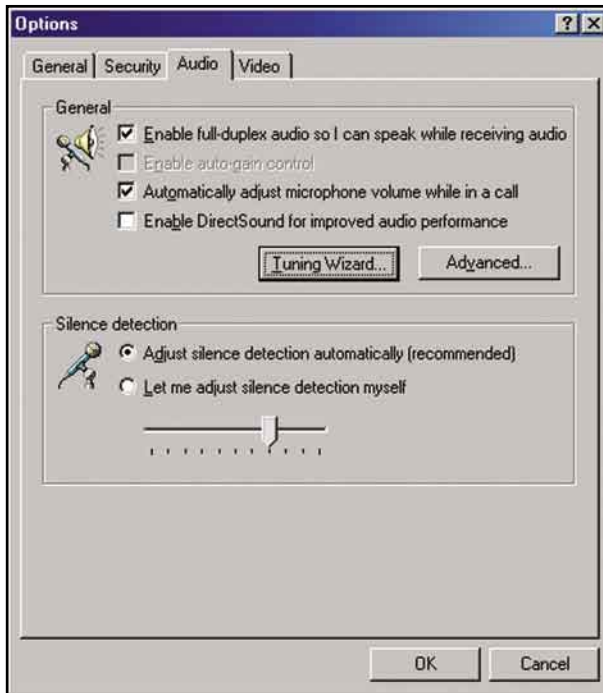
**Note:** When installing the USB Phone under Windows 98SE/ME, you will need to confirm a few dialogs displayed by the New hardware installation wizard.

Please wait until the installation wizard completes. The phone is now ready for using with the software of your choice. To start using the phone with NetMeeting or Skype, please read the next chapter. If you want to use the phone with the *Corinex Softphone software* (included on the CD) and the VoIP service provider of your choice, proceed to chapter 3.

## 2.2 Using the USB phone with NetMeeting

After installing the hardware (chapter 2.1), you can use the *Corinex VoIP USB Phone* with Microsoft NetMeeting. All you have to do is to set up Netmeeting to use the USB phone as output/input device. Please follow the steps below:

1. Start NetMeeting and click on **Tools -> Options**. Then go to the tab **Audio**.



2. Click on **Tuning Wizard**. The following window will appear.

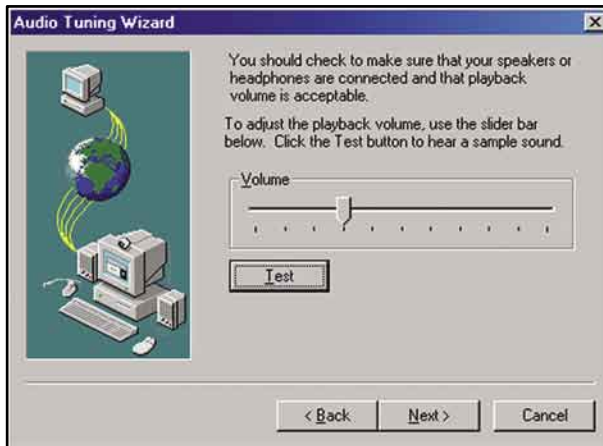
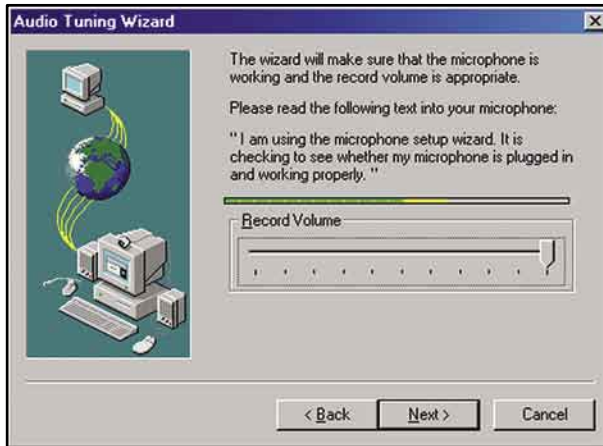


Click **Next** to continue to the next screen.



3. Here you can select the audio device for input/output. Please select the **K1000A device (USB Audio Device in Windows 98/2000)** and click **Next**.

- On the next two screens you can adjust volume for playback and recording.

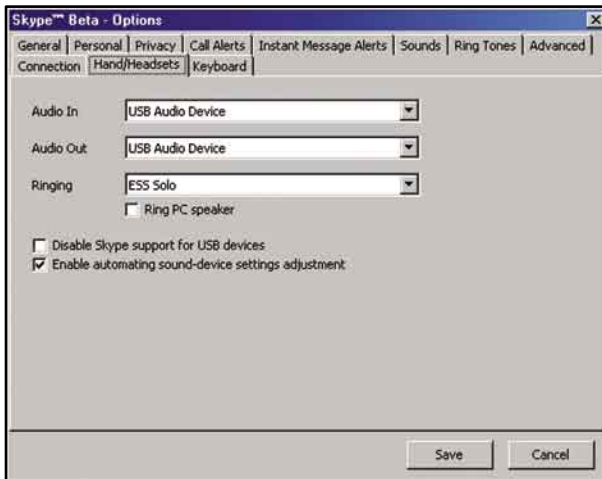


After this setting, click **Next** and finish the configuration wizard. The NetMeeting software is now configured to use the USB Phone for making and receiving voice calls.

## 2.3 Using the USB phone with Skype

After installing the hardware (chapter 2.1), the USB phone can be used with Skype ([www.skype.com](http://www.skype.com)) for voice communication. All you have to do is to set up Skype to use the USB phone as output/input device. Please start the Skype application and follow the steps below:

1. Click on File -> Options and go to the tab Hand/Headsets



2. On this screen, you can see three sound device settings. Please set Audio in, Audio out and Ringing to the **K1000A device (USB Audio Device in Windows98/2000)**. Make sure that the checkbox **Disable Skype support for USB devices** is unchecked.

**Note:** If you have another sound card in your computer, which is connected to speakers, you can use it for ringing. In this case, you can set the Ringing setting to your sound card. If you don't have any additional sound card, you can use the built-in PC speaker for ringing with checking the option Ring PC Speaker.

3. Click **Save** to accept the changed configuration. Skype is now ready to be used with the *Corinex VoIP USB Phone*.

## 3 Using the USB phone with Corinex Softphone

The *Corinex VoIP USB Phone* comes with a CD including the *Corinex Softphone software* which enables you to use VoIP services of different providers. In order to use it, you have to sign up to a provider first and get the access information necessary to start making phone calls. Please read the following chapters to learn how to do it.

### 3.1 Using the phone with predefined free operators

For your convenience, the *Corinex Softphone* contains the settings for a few predefined operators: Free World Dialup, AddaVoice and Sip Phone. You can choose one of them and read in the next chapters how to sign up to their VoIP service.

#### 3.1.1 Free World Dialup

To sign up to this operator, open your Internet browser application and go to the web site <http://www.freeworlddialup.com>



To start the sign up process, click on the red button **Get FWD!** at the right side. The following screen will appear:



Now click on the **Sign up** link. The next screen will ask for your personal information.



Fill in the fields your personal information and continue with the **Next** button. After this, your number and password will be sent to your e-mail address. To start using the service you've just signed up to, please proceed to chapter 3.2.



## 3.1.2 AddaVoice

To sign up to this operator, open your Internet browser application and go to the web site <http://www.addavoice.com> Then click on the link **Sign up**.



Follow the steps on the screen to go through the sign-up process.

14



After submitting all necessary information, your number and password will be sent to your e-mail. To start using the service you've just signed up to, please proceed to chapter 3.2.

## 3.1.3 SIP Phone

To sign up to this operator, open your Internet browser application and go to the web site <http://www.sipphone.com> Then click on the link My SIPphone.

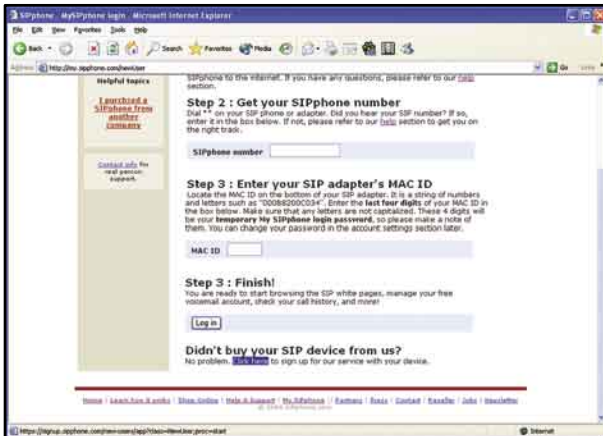


Now click on the link **Sign up** which is located at the middle of the text.

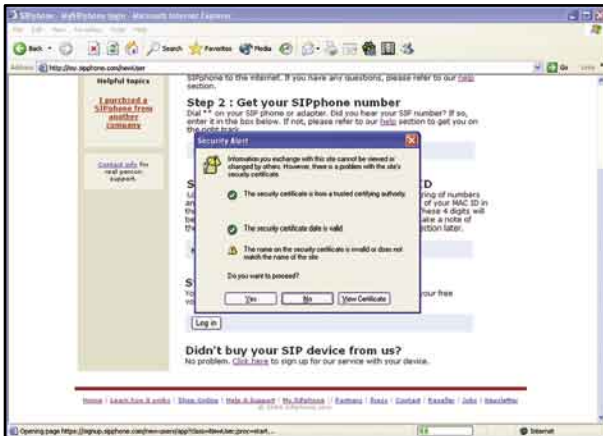
15



The appropriate link to continue is located at the bottom of the web page. Click on it ([Click here](#)).



A security alert may appear. To continue, click on the Yes button.



Then fill out the fields with your personal information and click on the Register button.



Your number and password will be sent to your e-mail address. To start using the service you've just signed up to, please proceed to chapter 3.2

## 3.2 Software installation

In order to be able to use the *Corinex VoIP USB Phone* with VoIP services from different operators, you have to install the *Corinex Softphone* client first.

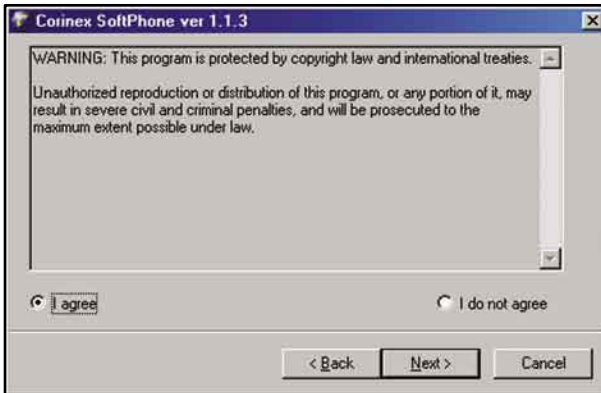
1. Insert the installation CD, it should start automatically. If not, start the application by selecting **My Computer**, usually found on the desktop or Laptop start up screen. Navigate to the **CD drive**, and double click on the drive. The following screen should be displayed:



2. To read the documentation (this manual), choose **Read documentation**.
3. Click on the **Install Corinex Softphone** to start the installation process. The following screen appears:

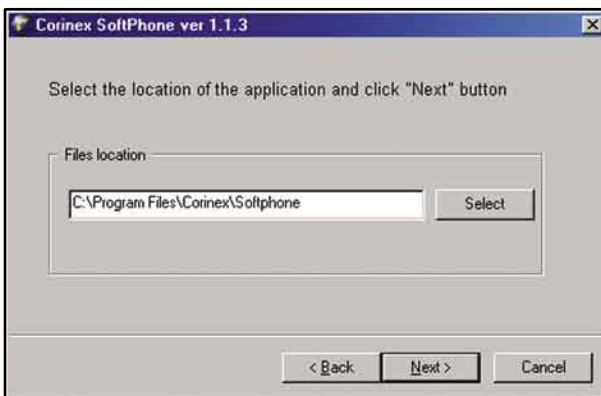


- Click on **Next**. On the following screen, please read the copyright notice.



Please click on **I agree** to confirm that you have read and understood the copyright notice. Click on **Next** to continue to the next screen.

- The next screen asks you where to install the *Corinex Softphone*.



Click **Next** to continue.

6. Wait while the installer copies all the files to your harddrive and the following information appears.
7. The installation guide creates a shortcut on your desktop.



Once the *Corinex Softphone* is installed on your computer, you have to start it and make the initial settings described in the next chapter.

## 4 Using the Corinex Softphone software

### 4.1 First start of the Corinex Softphone

When you start the *Corinex Softphone* for the first time, you will be asked for initial configuration of your VoIP service so that the software is able to connect to your VoIP provider.



The screenshot shows the 'Settings' dialog box with the 'Account' tab selected. The 'Your account' section contains the following fields and values:

Field	Value
Account name:	Free World Dialup
Your number:	012345
Login name:	corinex
Password:	*****
Realm / Domain:	fwd.pulver.com
Nickname:	corinex

Below the fields are two buttons: 'Change service provider' and 'Sign up to a VoIP service provider'. At the bottom of the dialog are 'OK', 'Cancel', and 'Apply' buttons.

By clicking on the **Change service provider** button, you can select predefined settings for a few service providers, or prepare the configuration dialogs for custom settings.

- In case your provider is among the listed ones, please click on the name of the provider. Connection settings will be automatically entered into the required fields of the configuration dialog. All you need to do now is to enter your login/number and password for authentication – this information was provided to you by your VoIP service provider. If you have not signed up to any service provider yet, please read chapter 3 or click the link on the bottom **Sign up to a VoIP service provider**.



- If you cannot find your provider in the list, please select the **Custom settings** in the list and enter all information provided by your VoIP provider into all fields in the tabs **Account** and **Connection**. This includes authentication data (**login**, **number** and **password**), **realm** server which is used for authentication, **SIP proxy** addresses and **STUN** server.

**Note:** Some providers (e.g. Ecuity) require extra authentication information - the **login** field. In case your provider gave you a **login**, along with the number and password, please enter it into the login field. Otherwise, you can leave the field empty. If you use a predefined provider profile, it may happen that the **login** field is greyed-out and you cannot edit it. This means, the provider doesn't require this information.

**Note:** Please make sure that the **Phone device** setting under the **Audio** tab is set to the **K-1000A** sound device (in Windows 98SE and Windows 2000 the device is called **USB Audio Device**). Otherwise the software will not use the USB phone as input/output device. If this setting is not correct, please replug the USB Phone into the USB Port and restart the Softphone.

## 4.2 Advanced configuration

This section covers the configuration of the *Corinex Softphone software* when a router is used for connection of the network to the Internet. The router must be configured to pass VoIP packets from the user's computer to the Internet and back. There is a function in the router called Port Forwarding. You must set up this function to open the default VoIP ports 5060 and 8000 to be forwarded to the computer with *Corinex Softphone*.

**Note:** If there are more users in the network, using SIP software, they cannot use the same SIP and RTP ports for VoIP calls. If they use the same ports, the router will not be able to recognize users and the software won't work properly. Please set up port forwarding for all users.

Example:

- User A has IP address 192.168.0.2, SIP port 5060 and RTP port 8000
- User B has IP address 192.168.0.3, SIP port 5061 and RTP port 8001
- The router should forward all UDP packets directed to ports 5060 and

8000 to the IP address 192.168.0.2 and all UDP packets directed to ports 5061 and 8001 to the IP address 192.168.0.3

After these settings, please click **Apply**. On the Softphone, the following information will show up and the software will try to register with the VoIP service provider.



After successful registering, the name of the service provider will be displayed, for example Free World Dialup as seen below. Now the software is waiting for your input, either using the interface on the screen or using the *Corinex VoIP USB Phone*.



If the software is not able to register with the chosen VoIP provider, it will display one of the following error messages:

Program message	Explanation
Registering problem, bad username or password	The authentication server rejected your username / password. You probably entered them wrong. Please check the configuration.
Registering problem, couldn't find registrar	The application was not able to find an authentication server at the address you entered in the settings. Please check the configuration.

### 4.3 Using the Corinex Softphone

After successful configuration, you should see the main window with a large display and buttons. All calling functions can be accessed using this window or using the buttons on the USB phone. Some advanced functionality like configuration of the software, or phonebook editing is possible only via the software interface.

#### 4.3.1 Display

This section covers the display of the Softphone. The display has three sections as seen on the following image, used for displaying different types of information.



The upper section is used to display information about connection status. Here you can see the status of the registration process, name of the provider you are connected to, or error messages, if there is a problem with connecting to the VoIP service provider.

Message	Meaning
Registering...	The Softphone tries to connect to a VoIP service provider.
Registering problem, bad username or password	The Softphone received an error message from the provider, which did not accept your username or password. Please check your settings.
Registering problem, couldn't find registrar	The Softphone was not able to find a VoIP gateway at the address you entered in the configuration dialog. Please check your settings.
[ name of the service provider ]	The Softphone is connected and you are able to use the services of the VoIP service provider.

The middle line displays information about current calls – the number you are dialing, the number or contact which is calling you or duration of the current call.



Message	Meaning
[ number you are dialing ]	If you dial a number using either the phone keyboard or the Softphone's buttons, the number is being displayed.

[ number / nickname ] is calling	Someone tries to call you. If you don't have this number in your phonebook, only the number or the nickname is being displayed. In case you have this number in the phonebook, the name from the phonebook is displayed.
[ displayed time ]	Information about the duration of the current call.
Hold	The call is held by your party.

The bottom line displays information about the status of the Softphone and system messages from the VoIP service provider.



Message	Meaning
Reset	The SIP module was restarted. All server messages were deleted and if there was an ongoing call, it was cancelled. This message disappears after a few seconds.
Time Out	Your last request to the server was timed out and wasn't successful.
Connection cancelled by peer	The SIP proxy server returned a CANCEL message. There was probably a communication error or internal proxy error.
Call wasn't accepted	The dialed party rejected your call.
Unresolvable destination	The dialed number does not exist.
Busy	The number you are dialing is busy. Along with this message, you will hear a busy tone in the earphone.

Connected [codec]	During a call, the codec used for communication is displayed.
Hanging up	The Softphone sent a request for ending the ongoing call.
Hung up	The call was ended.

**Note:** If the dialed party doesn't support the codec which you have selected in the configuration, the codec will be changed automatically to a supported one.

### 4.3.2 Phone controls

This section explains the functionality of both the software's buttons and the keys on the phone. For most of the functions, the buttons in the software and keys on the phone have the same meaning, however, some of them are accessible only by using the software interface.



1. Clicking on the **Help** button (question mark) will start your Internet browser and point you to the Online Help page for the *Corinex VoIP USB Phone*, which can be found at <http://www.corinex.com/voip/help>
2. The red LED shows the status of the USB phone.

Status	Meaning
On	The USB phone is connected
Off	The USB phone is not connected

3. Clicking on the **Minimize** button minimizes the application to the system tray. It can be restored by double-clicking the **Softphone icon** in the system tray, or by right-clicking the icon and selecting **Restore** in the context menu which appears next to the icon. For closing the application, press **ALT-F4** or select **Exit** in the context menu.
4. On the left side of the display you can see the microphone level setting. The sensitivity of the microphone can be adjusted by clicking on + or -.
5. On the right side of the display you can see the phone speaker volume setting. The phone speaker volume can be adjusted by clicking on + or -. The speaker volume can be also adjusted by the phone's volume control buttons.
6. The **Dial** button is used for dialing a number after typing it or selecting a contact from the phonebook. It is also used for receiving calls, accessing the call logs and dialing a number from there. The following table shows the function assigned to the **Dial** button in various situations.

Softphone status	Functionality of the Dial button
Standby mode	Opens the call log with last dialed, received and missed calls
When someone calls you	Accepts the call
In the call log	Dials the number which is selected
In the phonebook	Dials the contact which is selected

7. The **Cancel** button has multiple meanings according to the application status. Please see the following table for details.

Softphone status	Functionality of the Cancel button
Standby mode	Resets the SIP module
When typing a number	Deletes the last typed character
When someone calls you	Rejects the call
During call	Ends the call
In the call log or phonebook	Returns to the standby mode

8. The **Menu** button opens the configuration dialog.
9. The button with the book symbol opens the phonebook.
10. The numeric keypad is used for typing a number, when in standby mode.

### Phone Keyboard

You can use the keypad of the USB phone for the most operations, like typing a number, dialing or rejecting a call. It can be used for selecting, dialing or deleting a contact from the phonebook, or displaying the call log. You can find the functionality of the phone's keys according to the status of the Softphone application, in the table below.





Key	Softphone status	Function
Dial	Standby mode without a number typed	Opens the call log
	Standby mode with a number typed	Dials the typed number
	Call log	Dials the selected number/ contact
	Phonebook	Dials the selected number/ contact
Cancel	Standby mode without a number typed	Resets the SIP module
	Standby mode with a number typed	Deletes the last character
	Call log	Returns to standby mode
	Phonebook	Returns to standby mode
0-9, #, *	Standby mode	Types the number / character
2	Phonebook or call log	Moves up in the list
3	Phonebook	Deletes the selected contact
	Call log	Deletes the call log
8	Phonebook or call log	Moves down in the list
# (press & hold)	Standby mode	Opens the phonebook

**Note:** If the application is minimized in the tray or is in the background, pressing any phone key will switch the application to the foreground.

### 4.3.3 Making a VoIP call

#### Calling a number

The simplest way to make a call is to type the number using the phone keypad and press the green **Dial** button. The program will send a call request to the provider. If your party is online and ready to accept calls, you will see a **Dialing...** message on the display and hear a tone in the phone's speaker. If your party is busy, you will receive a message about it on the display and hear a busy tone in the earphone. If your party is not online, there will be an instant connection for approximately 3 seconds and the call will be cancelled. If you want to cancel the dialing, press the

**Cancel button.**

### Ending a call

At any time during a call, you can press the red **Cancel** button for ending the call.

### Accepting or rejecting a call

If someone tries to call you, the phone starts to ring and the nickname or the number of the person will be visible on the display. You can either accept the call by pressing the **Dial** button or reject the call by pressing the **Cancel** button.

### Call logs

The Softphone contains a list of outgoing, incoming and missed calls so that you can see a statistics of all your calls and the missed calls.

The list can be accessed from the standby mode by clicking on the **Dial** button either in the software interface or on the USB phone keypad.

All calls are marked according to the type of the call.

Call marking	Type of call
->	Outgoing
<-	Incoming
x	Missed

To the right of the numbers, you can see the time when the call occurred. If you double-click on the entry in the log, you will switch to the detailed view, showing further details. To dial a number from the list click on the number and press the **Dial** button. You can navigate in the list using the keys **2** for moving up and **8** for moving down, either on the USB phone's keypad or by clicking on the buttons in the Softphone's interface. For deleting the list, press the button **3**.

If the call log is empty, the Softphone will return to the standby mode after a few seconds.

### Phonebook

The *Corinex Softphone* contains a user customizable phonebook, where you can store numbers of people who you usually call, so you don't need to remember the numbers.

### Displaying the phonebook

The phonebook is displayed by clicking on the button with the book symbol, by pressing and holding the # key on the USB phone or by double-clicking on the # button in the Softphone interface. After selecting a contact with the mouse, you can either call him or delete the contact from the phonebook.

Key	Function
2	Moves up in the phonebook
8	Moves down in the phonebook
3	Deletes the currently selected entry
Dial	Dials the currently selected number
Cancel	Closes the phonebook and returns to the standby mode

### Adding new contacts

For adding a new contact to the phonebook, please click on the **New Entry** field. Enter the name of the contact and press **Enter**. Click on the number displayed next to the contact name. Enter the number and press **Enter**. From now on, you can call this contact by selecting it in the phonebook and pressing the green **Dial** key.

### Deleting contacts

If you want to delete a contact from the phonebook, select it in the phonebook using the mouse or the phone keys and press the key **3**.

### 4.3.4 Configuration of the Softphone

The configuration dialog can be accessed by clicking on the **Menu** button. It consists of four sections.

#### 1. Account settings



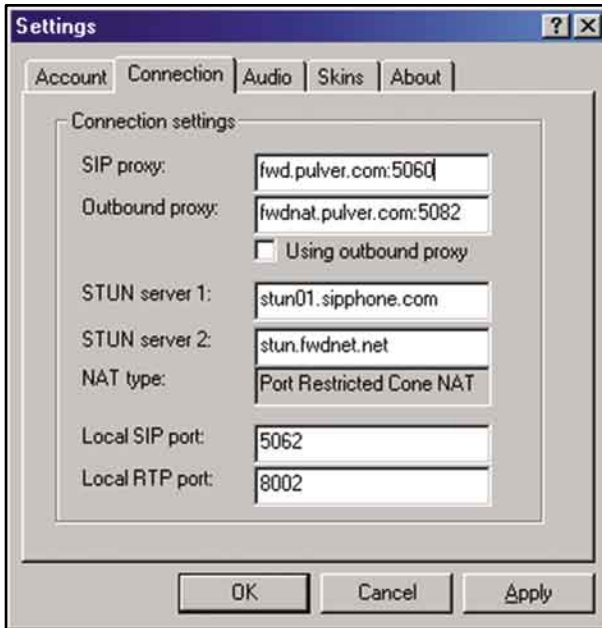
The screenshot shows a 'Settings' dialog box with a blue title bar and standard window controls. The 'Account' tab is selected, with other tabs for 'Connection', 'Audio', 'Skins', and 'About'. The 'Your account' section contains several text input fields: 'Account name' (Free World Dialup), 'Your number' (012345), 'Login name' (corinex), 'Password' (masked with asterisks), 'Realm / Domain' (fwd.pulver.com), and 'Nickname' (corinex). Below these fields are two buttons: 'Change service provider' and 'Sign up to a VoIP service provider'. At the bottom of the dialog are 'OK', 'Cancel', and 'Apply' buttons.

33

Here you can set up the authentication settings for your VoIP account. You can select one of the predefined VoIP service providers for an easy setup of account and connection settings, or select **Custom settings** if your provider is not in the list. All you need to enter is the **Account name** (which will be displayed on the Softphone's display when you will be connected to your provider), **Number** and **Password**. Some providers (e.g. Ecuity) require additional authentication information - the **Login** field. In case your provider gave you a login, along with the number and password, please enter it into the **Login** field. Otherwise, you can leave the field empty. If you use a predefined provider profile, it may happen that the **Login** field is greyed-out and you cannot edit it. This means, the provider doesn't require this information. You may enter your nickname into the **Nickname** field, which will be your caller ID when dialing a number.

**Note:** Login, password and realm must be provided by your VoIP service provider. For more details see chapter 3.

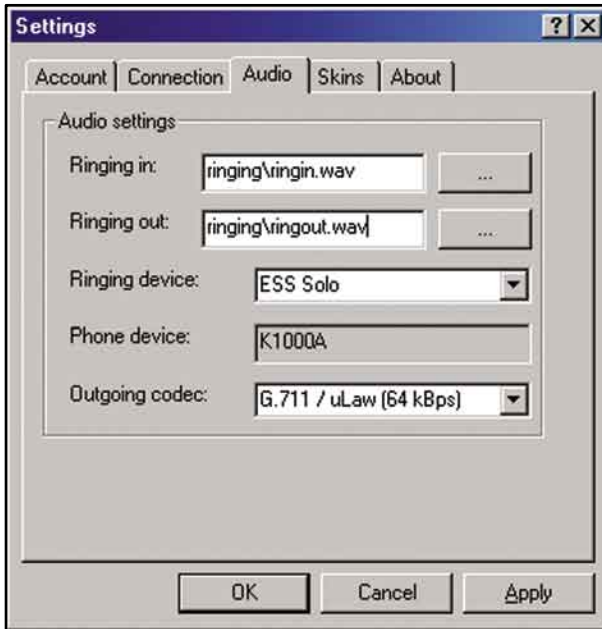
## 2. Connection settings



34

In this section you can set up the servers and ports, which are used for connection of the Softphone with a VoIP service provider. All the information must be provided by your VoIP provider, except of the local SIP port and local RTP port. Please see the chapter 4.2 for more information on how to set up these ports.

### 3. Audio settings



Here you can configure the ringtones of the Softphone, select the codec used for communication and select the sound device which will be used for announcing incoming calls and voice communication.

Ringing in	The sound which will be played when someone tries to call you. Any sound file in WAV format can be used by clicking the '...' button and selecting the file in the Open File dialog.
Ringing out	The sound which will be played in the USB phone's speaker when dialing a number. Any sound file in WAV format can be used by clicking the '...' button and selecting the file in the Open File dialog.

Ringin device	The sound device which will be used for playing the selected ringtone when someone tries to call you. If you have multiple sound devices, you can select which one you want to use.
Phone device	The sound device which is used for voice communication. This field cannot be changed and is set to the K-1000A device by default.
Outgoing codec	Codec which will be used for voice communication.

#### 4. Skin settings



Here you can select one of the installed skins. *Corinex Softphone* is not limited to its default look. Corinex provides several color schemes for the Softphone interface. To change the skin, please select it in the list and click the **OK** button. The Softphone will disappear and after a few seconds it will appear with the new skin.

It may happen that the Softphone's interface is too small for you, especially if you use a high screen resolution (e.g. 1600x1200). In such case, you can click on **Doublesize** to enable magnification of the Softphone interface. You can also let the software to change the size automatically, according to your desktop resolution. At resolutions higher than 1024x768, the Softphone will switch into the magnified mode. Otherwise, the interface will be displayed with the standard size. If you want to enable this automatic setting, please choose **Autosize**.

For more skins, please have a look at <http://www.corinex.com/voip>